

The Barn

Hawkhill Business Park, Lesbury, Alnwick,
Northumberland, NE66 3PG

'The Barn' is part of the 'Alnwick Enterprise Space' initiative which aims to provide commercial space for rural businesses in and around Alnwick. The single storey office building has been subdivided to provide 6 serviced office suites from 9.37 sq m (100.91 sq ft) to 23.60 sq m (254.04 sq ft). The suites are furnished and available for immediate occupation.

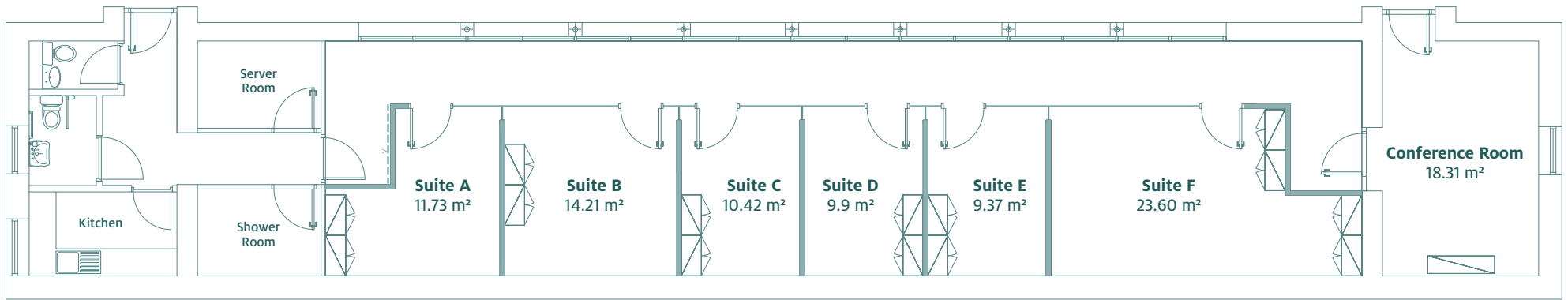
Benefits include:

- High speed broadband
- Modern design incorporating glazed frontage
- Fully furnished
- Bookable meeting room
- Shower facilities
- Communal kitchen
- On-site car parking
- Picturesque setting

Contact

For further information or to arrange to view contact the Northumberland Estates Office on 01665 510777.





Location

Hawkhill Business Park is located approximately 2.6 miles east of Alnwick town centre just off the A1068. The location benefits from good transport links with the A1 and Alnmouth train station both within a 2 mile radius. Alnwick itself benefits from an abundance of amenities including shops, cafes, banks, hotel and leisure facilities.

Terms

The suites are available for immediate occupation on flexible terms for a minimum period of six months. Please refer to the availability schedule for vacancy and rental information.

